

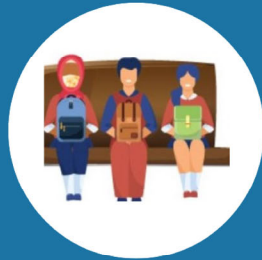


SCHOOL BUS ETIQUETTE

Parents/guardians share a role in reinforcing school bus safety and acceptable behaviour of students while riding the school bus. The expectations of students on the school bus is the same as in the classroom.

Sit in your assigned seat

Find your assigned seat immediately, if you are unsure of your seat number, ask your driver. Always remain seated and face forward. Students who do not sit properly can be seriously injured



Listen to your Bus Driver

Always follow the driver's instructions the first time they ask. They are responsible for your safety.



Keep your hands and feet to yourself

Disruptive behaviour is a distraction to other students and to the driver. The same rules apply on the school bus as in the classroom.



Speak Quietly

Use your inside voice. Excessive noise can be a distraction to the driver and the safe operation of the school bus.



Keep Aisles Clear

Backpacks and other large items are to stay on your lap or under the seat. Items in the aisle may be a tripping hazard and do not allow for a safe evacuation if required.



No eating or drinking

Save snacks for snack time at school or till you get home. They may spill or you may choke if the bus goes over a big bump.



BE KIND. BE NICE. TREAT YOUR DRIVER AND OTHER STUDENTS WITH THE RESPECT THEY DESERVE!